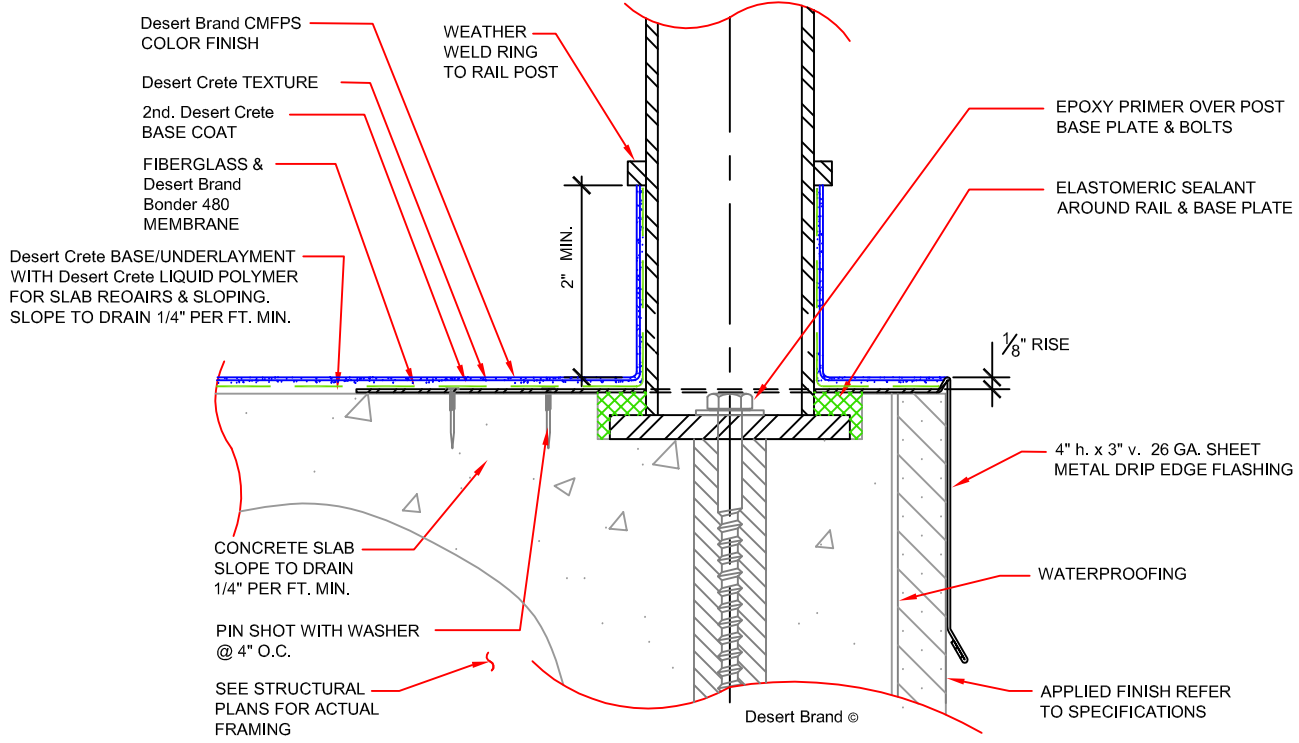


Desert Flex Mt'l Rail Post Detail
HILL BROTHERS CHEMICAL COMPANY
 1675 N. Main St. Orange, CA 92867 (714) 998-8800 Fax: (714) 998-6310

Date: 10/10/05
 Issue: Standards
 SCALE: 1/2" = 1"
 PROJECT:
 Desert Flex Detail
206



GENERAL NOTES:
 ISOLATE ALL COPPER & ALUMINUM MATERIALS FROM FERROUS METALS BY APPLICATION OF Desert Crete BOND COAT MATERIAL.

USE STAINLESS STEEL FASTENERS AT COPPER PANS & FLASHINGS.

REFER TO ARCHITECTURAL & STRUCTURAL DRAWINGS AND SPECIFICATIONS FOR ADDITIONAL INFORMATION REGARDING CONCRETE STRUCTURE, FRAMING, AND SHEET METAL INSTALLATION.