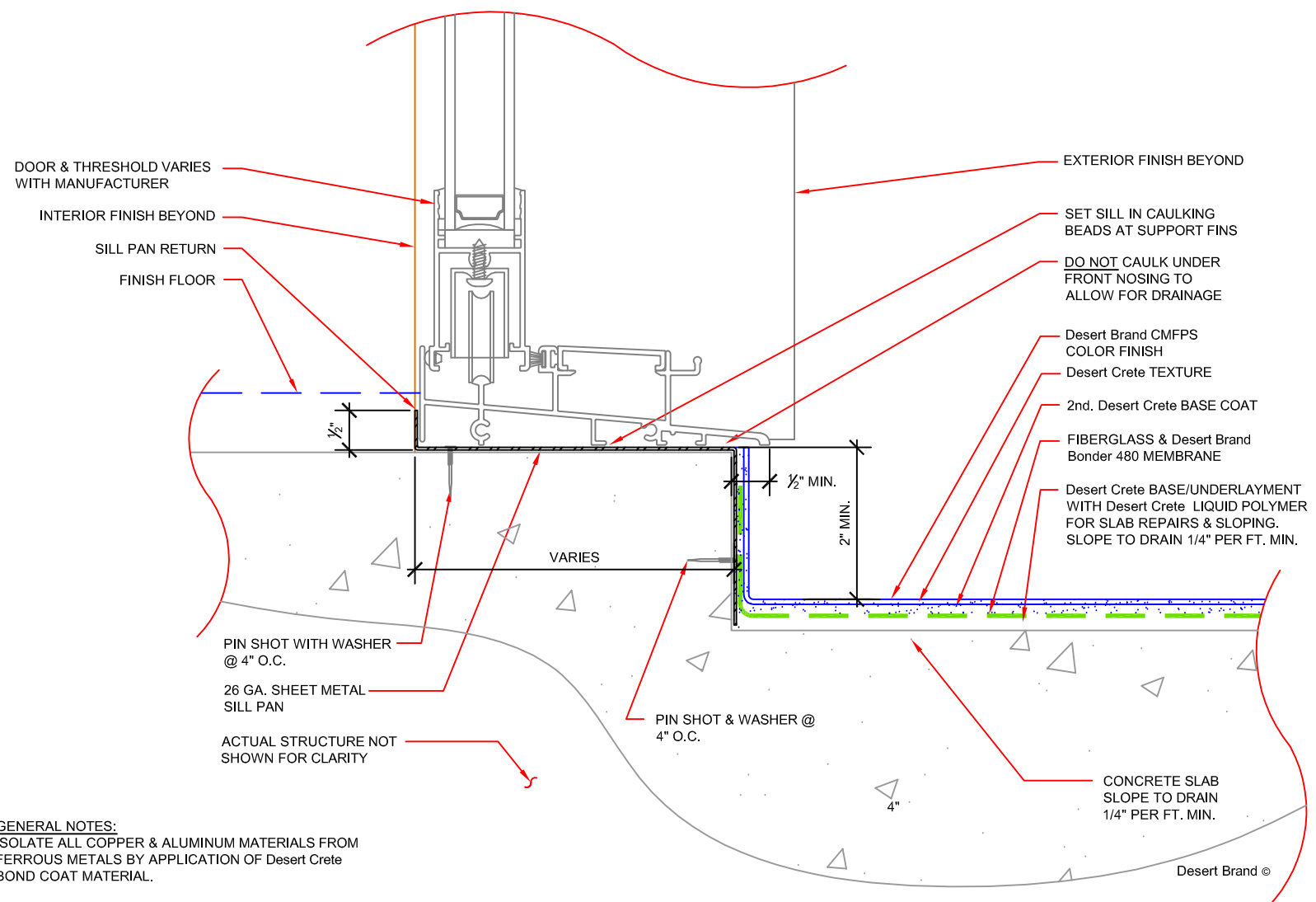


**Desert Flex Deck to Threshold**  
**HILL BROTHERS CHEMICAL COMPANY**  
 1675 N. Main St. Orange, CA 92867 (714) 998-8800 Fax: (714) 998-6310

Date: 10/10/05  
 Issue: Standards  
 SCALE: 1/2" = 1"  
 PROJECT:  
 Desert Flex Detail  
**203**



DOOR & THRESHOLD VARIES WITH MANUFACTURER

INTERIOR FINISH BEYOND

SILL PAN RETURN

FINISH FLOOR

EXTERIOR FINISH BEYOND

SET SILL IN CAULKING BEADS AT SUPPORT FINIS

DO NOT CAULK UNDER FRONT NOSING TO ALLOW FOR DRAINAGE

Desert Brand CMFPS COLOR FINISH

Desert Crete TEXTURE

2nd. Desert Crete BASE COAT

FIBERGLASS & Desert Brand Bonder 480 MEMBRANE

Desert Crete BASE/UNDERLAYMENT WITH Desert Crete LIQUID POLYMER FOR SLAB REPAIRS & SLOPING. SLOPE TO DRAIN 1/4" PER FT. MIN.

PIN SHOT WITH WASHER @ 4" O.C.

26 GA. SHEET METAL SILL PAN

ACTUAL STRUCTURE NOT SHOWN FOR CLARITY

PIN SHOT & WASHER @ 4" O.C.

CONCRETE SLAB SLOPE TO DRAIN 1/4" PER FT. MIN.

**GENERAL NOTES:**  
 ISOLATE ALL COPPER & ALUMINUM MATERIALS FROM FERROUS METALS BY APPLICATION OF Desert Crete BOND COAT MATERIAL.

USE STAINLESS STEEL FASTENERS AT COPPER PANS & FLASHINGS.

REFER TO ARCHITECTURAL & STRUCTURAL DRAWINGS AND SPECIFICATIONS FOR ADDITIONAL INFORMATION REGARDING CONCRETE STRUCTURE, FRAMING AND SHEET METAL INSTALLATION.

Desert Brand ©